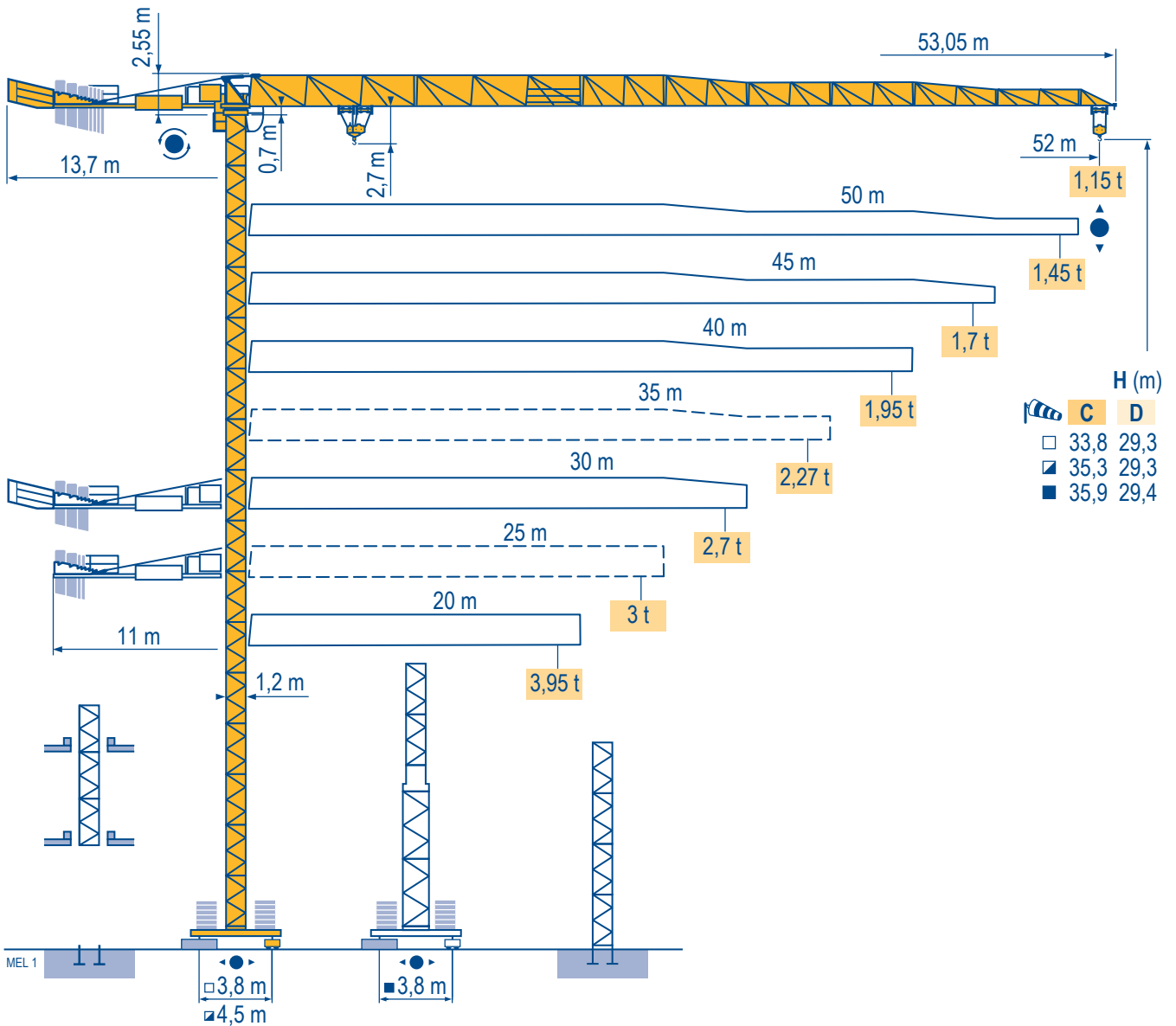


MCT 88



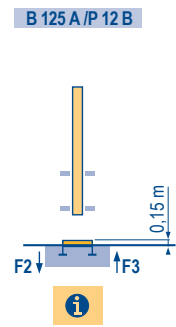
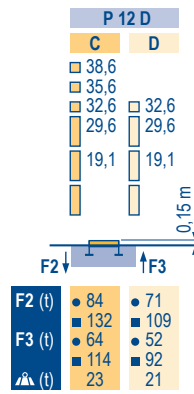
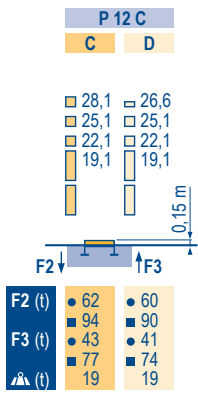
City Topless

Mat / Réactions \square 1,2 m

Maste /
Eckdrücke
Masts /
Reactions
Mástil /
Reacciones
Torre / Reazioni
Tramo /
Reacções



MEL 2

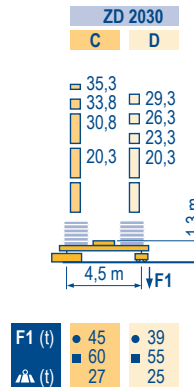
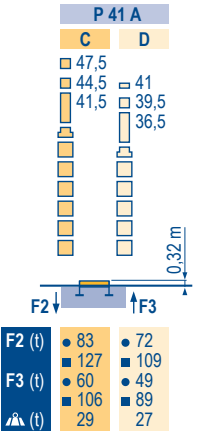


\square 1,6/1,2 m

Maste /
Eckdrücke
Masts /
Reactions
Mástil /
Reacciones
Torre / Reazioni
Tramo /
Reacções



MEL 2

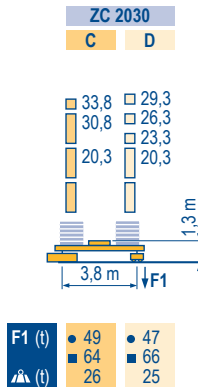


\square 1,2 m

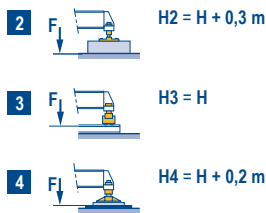
Maste /
Eckdrücke
Masts /
Reactions
Mástil /
Reacciones
Torre / Reazioni
Tramo /
Reacções



MEL 2



ZC 2030 - ZC 4230 - ZD 2030



**City Topless
MCT 88**



F	D	GB	E	I	P
 Profil de vent suivant FEM 1.004/1.005 Réactions en service Réactions hors service A vide sans lest (ni train de transport) avec flèche et hauteur maximum.	Windbedingungen gemäß FEM 1.004/1.005 Reaktionskräfte in Betrieb Reaktionskräfte außer Betrieb Ohne Last, Ballast (und Transportachse), mit Maximalausleger und Maximalhöhe.	Wind conditions according to FEM 1.004/1.005 Reactions in service Reactions out of service Without load, ballast (or transport axes), with maximum jib and maximum height.	Conformidad de los condiciones de viento FEM 1.004/1.005 Reacciones en servicio Reacciones fuera de servicio Sin carga, sin lastre, (ni tren de transporte), flecha y altura máxima.	Condizioni del vento secondo FEM 1.004/1.005 Reazioni in servizio Reazioni fuori servizio A vuoto, senza zavorra (ne assali di trasporto) con braccio massimo e altezza massima.	Perfil de vento conforme FEM 1.004/1.005 Reações em serviço Reações fora de serviço Sem carga (nem trem de transporte)- sem lastro com lança e altura máximas.

Courbes de charges

Lastkurven

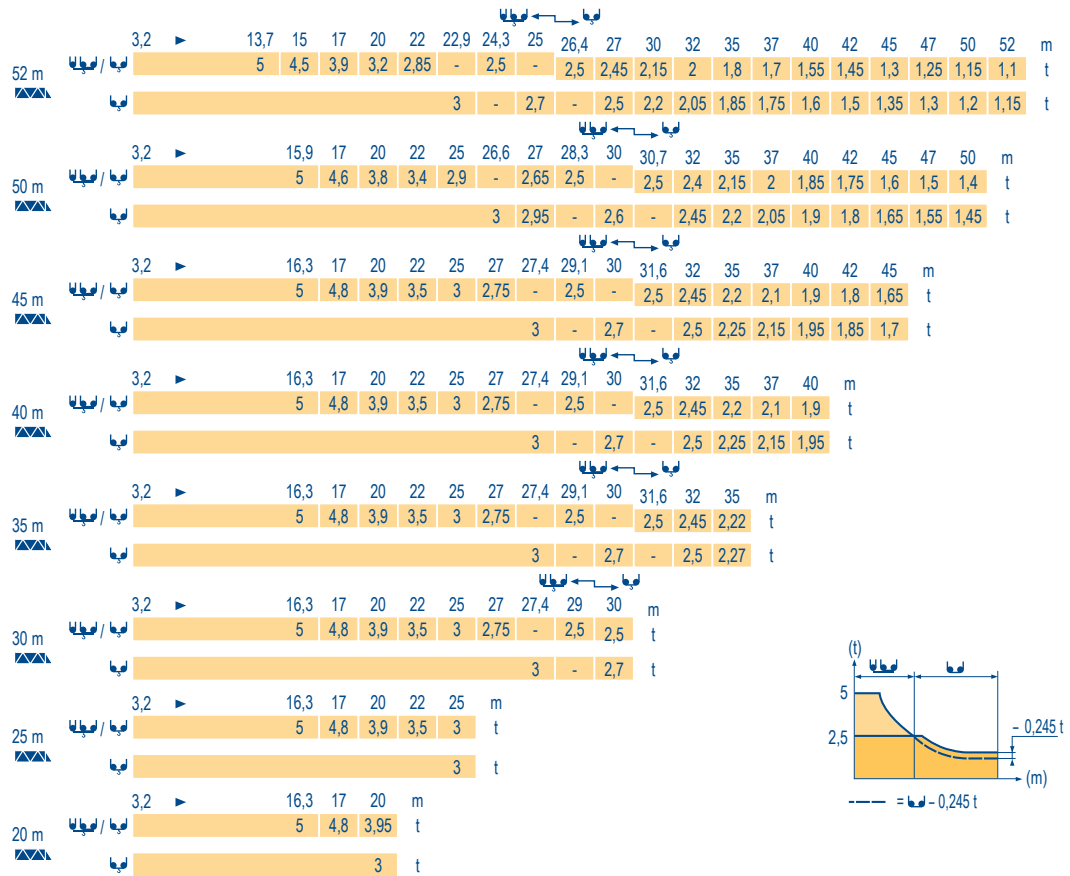
Load diagrams

Curvas de cargas

Curve di carico

Curva de cargas

MEL 1



Lest de contre-flèche

Gegenauslegerballast

Counter-jib ballast

Lastre de contra flecha

Contrappeso

Lastros da contra lança

MEL 1

	3 x 3000 + N x 1000 kg 2 x 3000 + N x 1000 kg	
		(kg)
52 m	13,7 m	13 000
50 m	13,7 m	13 000
45 m	13,7 m	12 000
40 m	13,7 m	11 000
35 m	13,7 m	10 000
30 m	13,7 m	9 000
25 m	11 m	8 000
20 m	11 m	7 000

Lest de base

Grundballast

Base ballast

Lastre de base

Zavorra di base

Lastros da base

MEL 1

1,2 m	ZC 2030		H (m)	33,8	30,8	29,3	26,3	23,3	20,3	17,3
	C	(t)		70	55	50	45	35	35	35
	D	(t)		-	-	75	55	40	35	35
1,2 m	ZD 2030		H (m)	35,3	33,8	30,8	29,3	26,3	23,3	20,3
	C	(t)		60	50	40	35	30	25	20
	D	(t)		-	-	-	55	40	30	25
1,6/1,2 m	ZC 4230		H (m)	35,9	32,9	29,4	27,9	22,4	17,4	
	C	(t)		80	60	50	45	30	30	
	D	(t)		-	-	80	60	40	30	

City Topless MCT 88

POTAIN



F

Nous consulter

D

Auf Anfrage

GB

Consult us

E

Consultarnos

I





Consultateci

P

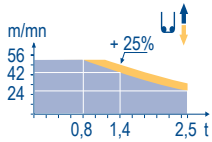
Consultar-nos

Mécanismes
Antriebe
Mechanisms
Meccanismi
Mecanismos

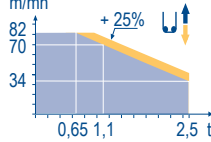
MEL 2

		U						U				ch - PS hp	kW														
▲	15 LVF 13 Optima	m/min	2,8	→	7,6	→	24	→	42	→	56	1,4	→	3,8	→	12	→	21	→	28	15	11	200 m				
		t	2,5		2,5		2,5		1,4		0,8	5		5		5		2,8		1,6							
	25 LVF 13 Optima	m/min	4	→	11	→	34	→	56	→	70	→	82	2	→	5,5	→	17	→	28	→	35	→	41	25	18	329 m
		t	2,5		2,5		2,5		1,45		1,1		0,65	5		5		5		2,9		2,2		1,3			
●	15 LVF 15 Optima	m/min	2,3	→	6,1	→	19	→	34	→	46											15	11	159 m			
		t	3		3		3		1,7		0,95																
●	25 LVF 15 Optima	m/min	3,6	→	9,6	→	30	→	48	→	60	→	72											25	18	228 m	
		t	3		3		3		1,7		1,3		0,75														
●	RVF 61 Optima +	tr/min U/min - rpm																0 → 0,8	7,5	5,5							
◀ ▶	4 DVF 3	m/min																0 → 63	5	3,7							
	ZC 2030 ZD 2030	RT 224																25	2 x 4	2 x 2,9							
	ZC 4230	RT 324																12,5 - 25	2 x 7	2 x 5,2							
CEI 38 		IEC 38															kVA										
400 V (+6% -10%) 50 Hz																	15 LVF : 25 kVA 25 LVF : 35 kVA										

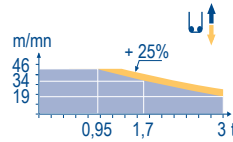
15 LVF 13 Optima



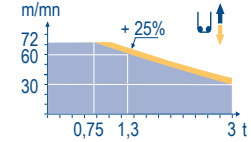
25 LVF 13 Optima



15 LVF 15 Optima



25 LVF 15 Optima



F

Levage
Distribution
Orientation
Translation

D

Heben
Katzfahren
Schwenken
Kranfahren

GB

Hoisting
Trolleying
Slewing
Travelling

E

Elevación
Distribución
Orientación
Traslación

I

Sollevamento
Distribuzione
Rotazione
Traslazione

P

Elevação
Distribuição
Rotação
Translação



Document commercial non contractuel. Pour toute information technique se référer à la notice correspondante.

Unverbindliches Vertriebsdokument. Für technische Informationen, siehe die entsprechenden Anweisungen.

This commercial document is not legally binding. For any technical information, please refer to the corresponding instructions.

Documento comercial non contractuel. Para cualquier información técnica, ver la noticia correspondiente.

Documento commerciale non vincolante, per tutte le informazioni tecniche fare riferimento al catalogo istruzioni.

Documento comercial não contratual. Para qualquer informação técnica complementar consultar as respectivas instruções.



Americas

Tel : +1 888 479 7278
Tel : +1 717 593 2000

Europe - Middle East - Africa

Tel : +33 (0) 4 72 81 50 00
Tel : +44 (0) 191 522 2000

Asia - Pacific

Tel : +65 6264 1188
Fax : +65 6862 4040

www.manitowoccrane.com

18, rue de Charbonnières - B.R.173
69132 ECULLY Cedex - France

Tel : +33 (0) 4 72 18 20 20
Fax : +33 (0) 4 72 18 20 00
www.manitowoccrane.com

City Topless MCT 88

Réf. 2007 14 MEL 2

Copyright.Reproduction interdite © POTAIN 2007